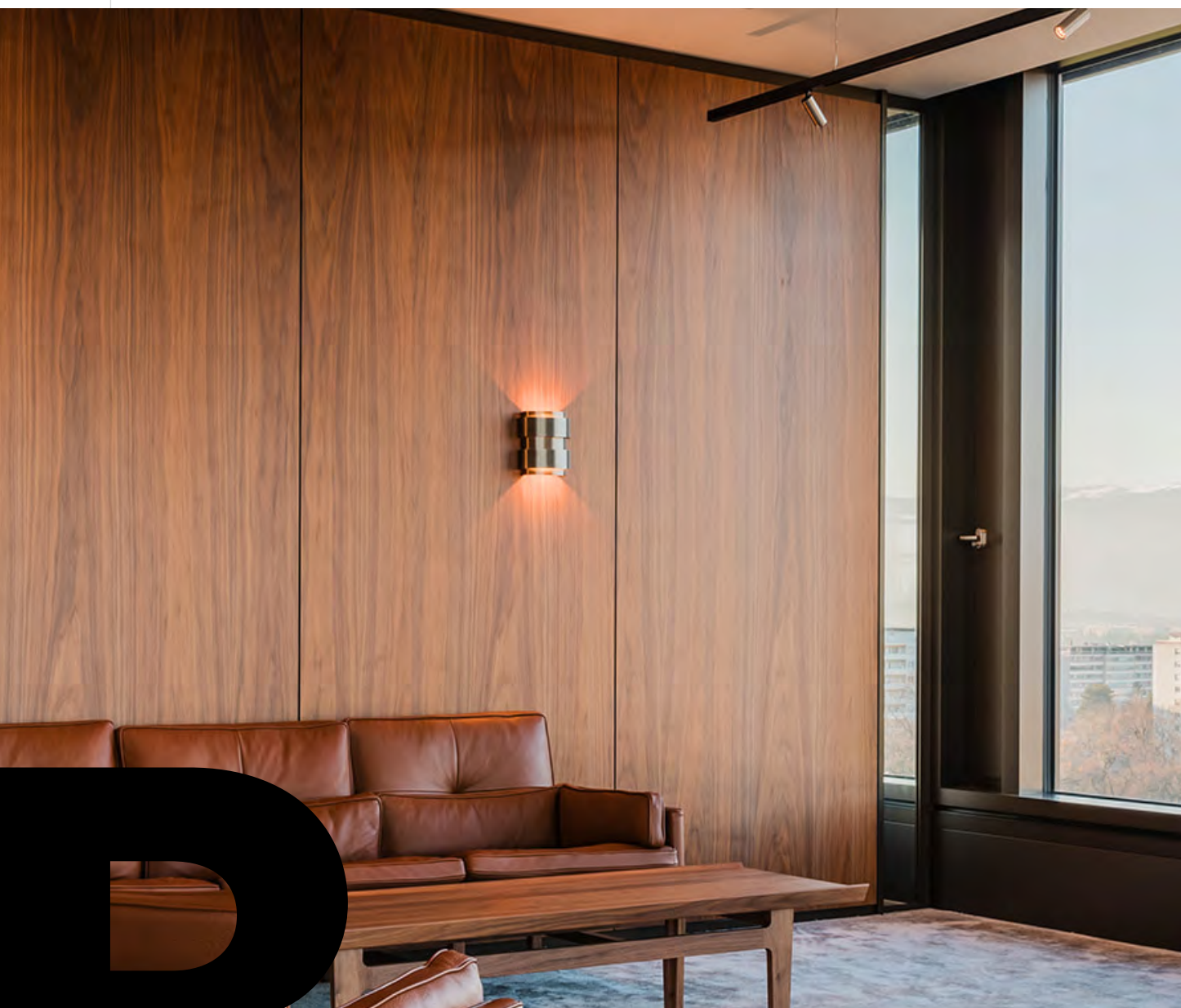


# BEDDELEEM

SYSTEM DESCRIPTION V1903



— JB 2000



# B

Design is not  
just what it  
looks like,  
design is  
how it works

Steve Jobs



— JB 2000



The JB 2000 relocatable partition wall is a modular, floor-to-ceiling partition with a steel structure and panels in coated woodchip board, steel-clad plasterboard or glass in an aluminium frame.

The design features clean right angles and door surrounds, recessed plinths and friezes and recessed vertical hollow joints.

The JB 2000 relocatable partition wall can be used in all non-residential buildings and is ideal for creating layouts in office buildings.

The partition has a limited number of parts so moving it takes a minimum of time and no specialised tools.

**BEDDELEEM**



# — JB 2000



## Wood & Metal EI00 — EI30 — EI60

The system features a continuous steel top and bottom profile, 50 mm as standard at the bottom and 40 mm at the top, finished with a durable powder coating.

### Partition panel options:

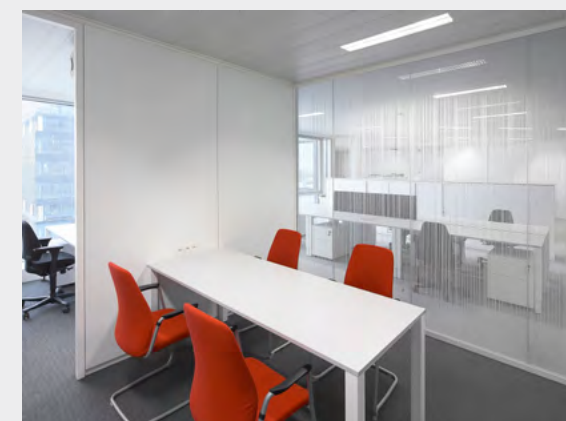
18 mm woodchip board with:

- melamine
- HPL
- wood veneer

### Metal\*:

- 1 mm powder coated steel + plasterboard

\* JB 2000 metal is C2C certified Bronze



# Unite

# &

# combine—

01 —

Door assembly on floor spring



An aluminium doorway frame whether or not completed with a door on a floor spring. This may be a glazed or plain door leaf.

03 —

Glazed aluminium door assembly



An aluminium doorframe with a door leaf that consists of an aluminium frame with single or double glazing.

02 —

Plain door assembly



The door leaf is either 40 mm or 50 mm thick in an aluminium or steel door frame according to the requirements.

04 —

Glazed sliding door



A glazed sliding door that slides in front, in back or into the partition.

05 —

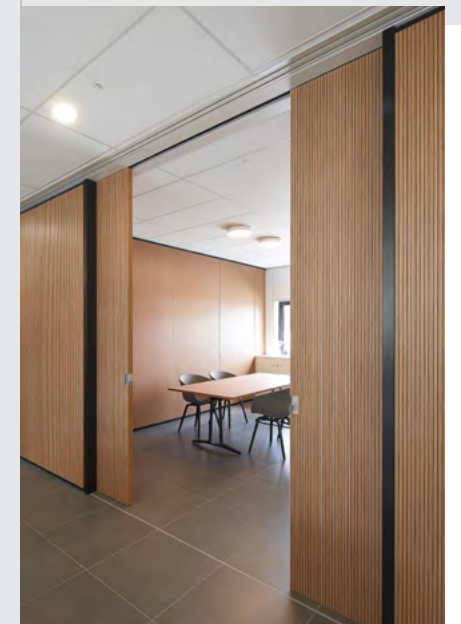
Fully glazed door assembly



A door leaf in toughened safety glass in an aluminium door frame.

06 —

Plain sliding door



The door leaf is either 40 mm or 50 mm thick that slides in front, in back or into the partition.

— doors





# Unite & combine—

01 —



## Whiteboard

A whiteboard that connects seamlessly with the rest of the partition. Useful during a meeting or for hanging up documents, photos, etc.

02 —



## Grooves

Grooves are used for acoustic or aesthetic reasons. There is an endless range of options.

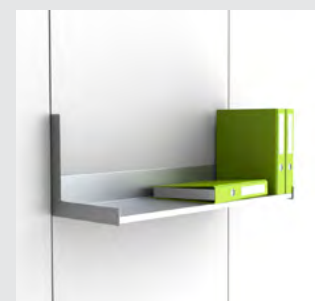
03 —



## Perforation

Perforation is chosen for acoustic reasons. Panels are available in wood or steel.

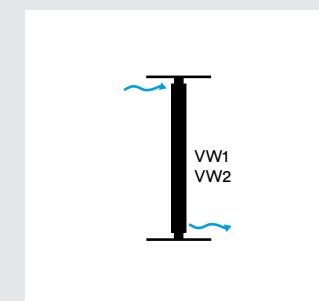
04 —



## Accessories

There are numerous accessories for the JB 2000 partition system, to give that little extra something to your office interior. Consult the JB ACCESSORIES brochure to see the full range.

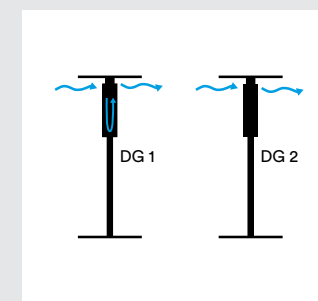
05 —



## Air transfer element partition

You can easily provide any room with sufficient ventilation. The air transfer element can visibly or invisibly be integrated in the partition.

06 —



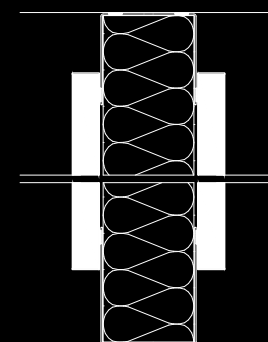
## Air transfer element door

The element uses the existing differences in air pressure, which may, or may not, be mechanically actuated.

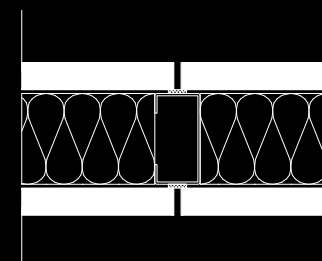
B

# JB 2000 technical details

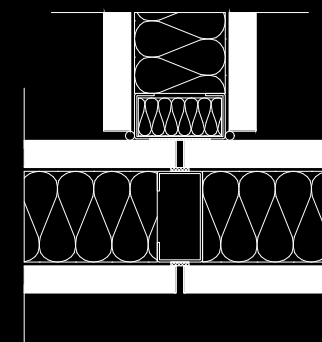
## TECHNICAL DETAILS



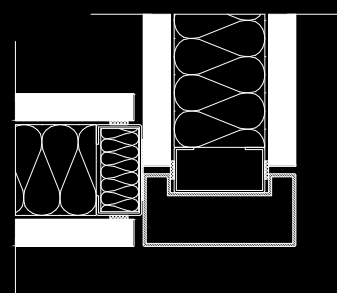
Vertical cross-section



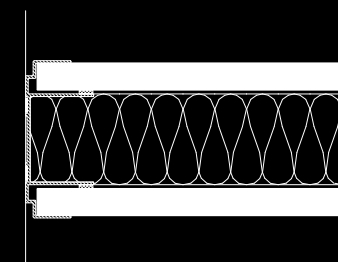
Horizontal cross-section



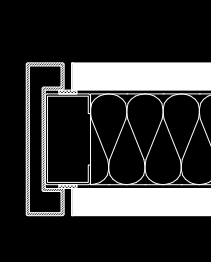
Partition connection



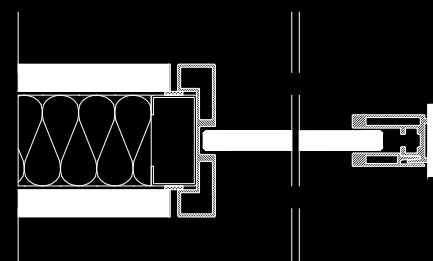
Corner solution  
There is also a corner solution with identical sides. 100 mm x 100 mm



Wall connection  
It is also possible to install a wall connection without a visible raised profile.



Partition end  
This is the 25 mm partition end; a 50 mm version is also available.

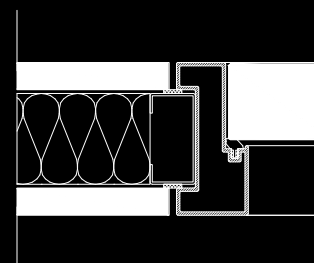


Profile for conversion to JB 4000 partition system.

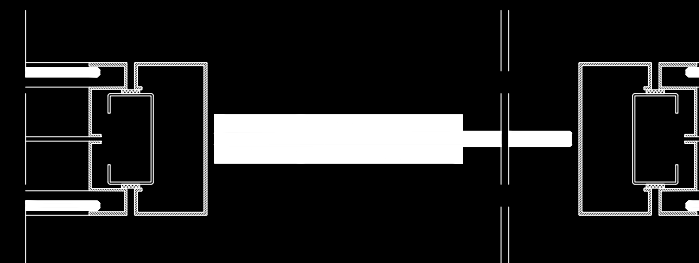
B

# JB 2000 technical details doors

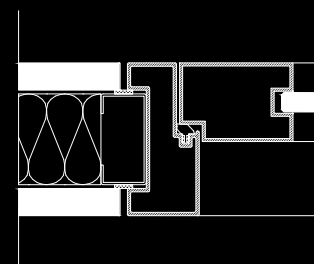
## TECHNICAL DETAILS



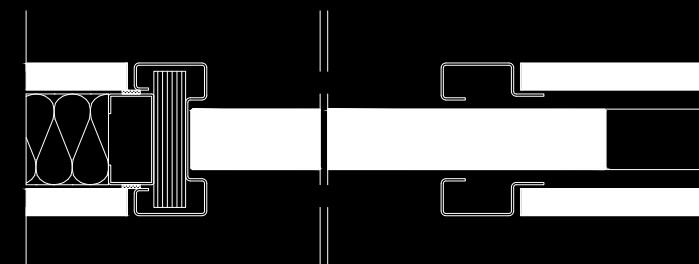
plain door assembly



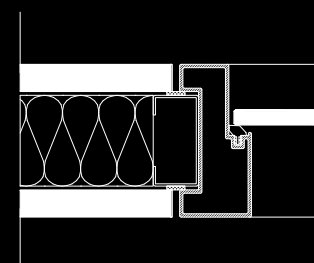
Door assembly on floor spring



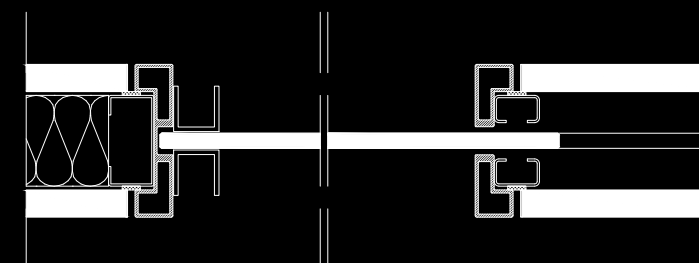
Glazed aluminium door assembly  
Single glass, placed central



Plain sliding door  
Into the partition



Fully glazed door assembly



Glazed sliding door  
Into the partition



PRODUCT INFORMATION

PARTITION WIDTH

The standard module for this partition is 1200 mm.  
(Other modules available on request)

PARTITION HEIGHT

Partition height can be up to 3000 mm in one panel.  
Greater heights are available on request, always with a panel interruption.

PARTITION THICKNESS

The partition thickness is 100 mm.

BUILDING TOLERANCES

Despite the narrow profiles the system can cope with the following building tolerances:

- ± 15 mm for the floor
- ± 15 mm for the ceiling

WEIGHT

JB 2000 EI00	ca 28kg/m²
JB 2000 EI30	ca 30kg/m²
JB 2000 EI60	ca 56kg/m²

PAINTWORK

All visible profiles are available in a choice of RAL colour. Ask for our sample card for the most recent range.

REACTION TO FIRE

The JB 2000 partition has a number of fire reaction certificates which are available on request.

FIRE RESISTANCE

The JB 2000 system with door assemblies is available with fire resistance class EI30 and EI60.

To achieve the necessary fire resistance class, a number of changes have been made as compared with the EI00 partition. These changes are described in detail in the separate test reports.

FLOW

Air transfer element

	2 Pa (m³/h)	10 Pa (m³/h)
VW1	±90	±200
VW2	±40	±90
DG1	±105	±230
DG2	±60	±130

Flow rate per running meter of opening.

ACOUSTICS

The acoustic tests are conducted in accordance with the standard EN ISO 140 or EN ISO 10140. The acoustic performance is displayed with the single number rating according to the NBN EN ISO 717-1, and with the class according to the NBN S01-400.

full partition

	Material	NBN S01-400	NBN EN ISO 717-1 (Rw)
EI00	wood	IIIa	48dB
EI30	wood	IIIa	49dB
AKO	wood	IIb	51dB - 54dB - 57dB
EI00	metal	IIIa	48dB
EI30	metal	IIb	52dB

full partition with door assembly

	Door leaf	NBN S01-400	NBN EN ISO 717-1 (Rw)
DGV32	DB40	IVb	32dB
DGV37	DB50	IVa	37dB
DGV43	MLDB50 + drop seal	IIIb	43dB

full partition with air transfer element

	Rw
VW1	42dB
VW2	42dB

door assembly with air transfer element

	Rw
DG1	The air transfer element has no influence on the door assembly.
DG2	

Note: All certificates available on request

For better performance, please consult our JB QUIET range.  
A partition system with superior acoustic values and similar detailing to the Standard JB 2000 partition.

CRADLE TO CRADLE

The JB 4000 system is available as Cradle to Cradle™ Bronze with steel panels.

Available in following colours: RAL 9005 Jet Black, RAL 9006 White Aluminium, RAL 9016 Traffic white, RAL 9004 Signal black and RAL 7022 Umbra grey.







**BEDDELEEM**



Venecoweg 14A, 9810 Nazareth-De Pinte

**T** +32 9 221 89 21

**E** [info@beddeleem.be](mailto:info@beddeleem.be)

[BEDDELEEM.BE](http://BEDDELEEM.BE)